

ANNUAL REPORT 2021

SECOND CHANCE SCHOLARSHIPS
FOR WOMEN AROUND THE WORLD



TABLE OF CONTENTS

Asherah Foundation 2021 Annual Report

Letter from the Asherah foundation Executive Director & CEO.....	3-4
2021 At-a-Glance.....	5
2021 Scholarship Recipients.....	6-7
2021 Executive Board Members.....	8-11
2021 Advisory Board Members.....	12
2021 Ambassadors.....	13
2021 Senior Management Interns.....	14
2021 Nonprofit Management Interns.....	15
2021 International Development Interns.....	16-17
Special Thanks to Our Global Community!.....	18
Contact Information.....	19

LETTER FROM THE EXECUTIVE DIRECTOR & CEO HEATHER MACCLEOD



Cause for Hope

March 8th, 2022

In 2016 when this organization was founded, the UNHCR estimated there were 65 million forcibly displaced people in the world. This included refugees, asylum seekers, and those facing internal displacement within their home country. Initial estimates for 2021 put the new total at 84 million – an increase of ~3 million/year.

However, within the last two weeks alone **2 million new refugees** have been added to that number from just one conflict! Millions more are internally displaced, and experts predict these numbers to grow.

The vast majority of single-parent households globally are headed by women, and many, many women hold this role.

32% of all women in Sub-Saharan Africa and 30% of all women in Latin America are the heads of their household – meaning that they are financially responsible for at least one dependent child! 13% of women globally hold this role.

In fragile and conflict-affected situations, **only 13% of females** are enrolled in higher education. In the lowest-income countries, only **9.7%** are.

The world is still reeling from two years of a global pandemic which disproportionately affected women – pulling them out of school and out of the workforce, subjecting them to increased violence and societal disenfranchisement.

Extreme weather events and ecological disasters continue to increase. It is no wonder that the World Economic Forum's 2022 Global Risks Report found that 89% of respondents "perceived the short-term outlook to be volatile, fractured, or increasingly catastrophic." Fully 84% of respondents expressed negative feelings about the future—that is, they were "concerned" or "worried".

In addition to the above, respondents highlighted "gloeconomic confrontations", "geopolitical resource contestation", and "cybersecurity failure" as significant concerns.

As I write this, the world is witnessing all of these challenges play out in real time.

However, there is **cause for optimism and even inspiration!** The Asherah Foundation's "Second Chance Scholarship" is awarded each year to women who have faced these challenges head-on and have persevered. Their resilience and ingenuity are powerful examples of what is possible. **When the human spirit and a supportive community come together, the impossible becomes possible.** Indomitable problems are conquered. The summits of even the tallest mountains are reached.

In 2021, we awarded our scholarship to four amazing women – each of whom has an inspiring story to share.

Since 2016, we have had almost **300** women representing **74** countries apply for our scholarship. They are refugees and single mothers, widows, divorcees, and child brides. They have faced cancer, displacement, and death.

Their dreams of attaining a higher education degree have been thwarted by politics, economics, culture, and the many demands society demands of women. They are also devoted sisters, daughters, wives, and mothers – often placing the needs of their families before their own.

Our goal for 2022 is simple: *to dramatically increase the number of women we support through our scholarships each year!* You can join us by donating to our [International Women's Day](#) fundraiser and following us across social media. Support these women through [reading their stories](#) and sharing their inspirational journeys with your loved ones.

Thank you to everyone who supports these women in ways both great and small.

Heather MacCleoud, PhD
Executive Director & CEO
March 8, 2022

Sources

- Crabtree, Steve, and Sofia Kluch. 2022. "How Many Women Worldwide Are Single Moms?". Gallup.Com. <https://news.gallup.com/poll/286433/women-worldwide-single-moms.aspx>.
- "Global Risks Report 2022". 2022. World Economic Forum. www.weforum.org/reports/global-risks-report-2022.
- "In historic crisis, 2 million people have fled Ukraine since the start of Russian invasion, U.N. says". 2022. Washington Post. www.washingtonpost.com/world/2022/03/08/ukraine-refugees-2-million-russia.
- "Refugee Statistics | USA For UNHCR". 2022. UNRefugees.Org. www.unrefugees.org/refugee-facts/statistics.
- Refugees, United. 2022. "Figures At A Glance". UNHCR. www.unhcr.org/en-us/figures-at-a-glance.html.

2021 AT A GLANCE



\$17000+

TOTAL
DONATIONS

90

APPLICATIONS
RECEIVED

\$5300+

SCHOLARSHIPS
FUNDED

4

SCHOLARSHIPS
AWARDED

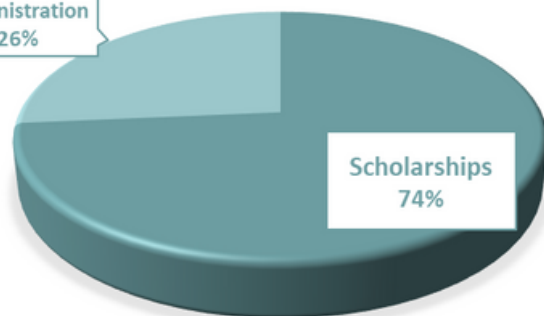
64

BOARD MEMBERS, AMBASSADORS,
AND INTERNS

FY 2021

Administration
26%

Scholarships
74%





MARYLINE JABAR

STELLA MARIS POLYTECHNIC UNIVERSITY

Despite having faced several challenges throughout her life, she has maintained persistent working and studying at the same time. This did not prevent her from successfully completing her Sophomore year as a major in Environmental Sciences and being Elected as Vice President for Administration of the Environmental Science Student Association (ESSA).



JACKLINE SAMUEL

CAVENDISH UNIVERSITY-UGANDA

COVID-19 has complicated life for everyone around the world. Jackline's Spring 2020 and Fall 2021 evaluations had to be held online in Spring 2021. Despite the delay, she successfully passed all her exams while at the same time supporting her extended family of 13 siblings. Due to COVID, several internet facilities had to close which became a challenge for her given that her program has been online even before the pandemic. Fortunately, the Asherah Foundation has continued to support her so she can continue her studies. Currently she is pursuing an internship while conducting a research project.



EVELYNE MANISHIMWE

BUJUMBURA INTERNATIONAL UNIVERSITY

Evelyn continues supporting *Appui aux Initiatives des Personnes Handicapées* - a local organization which advocates for those with disabilities. Thanks to all the generous donations, Evelyn has been able to purchase a computer to continue her online studies.



SAYYARA ALIYEVA

BAKU EURASIAN UNIVERSITY

When she was 11, Sayyara's home country of Azerbaijan declared independence from the disintegrating USSR. Despite the resulting upheaval, she was able to successfully complete her secondary education and was accepted into a university. Unfortunately, due to family and societal barriers, she was unable to complete her program and got married instead.

She is now a single mother who has supported herself and her son through tailoring. Now that her son is in high school, she has the freedom to pursue her dream of finally obtaining a higher education degree! She is pursuing a bachelor's degree in Journalism from Baku Eurasian University.

2021 EXECUTIVE BOARD



[LINKEDIN PROFILE](#)

HEATHER MACCLEOUD, PHD

FOUNDER, EXECUTIVE DIRECTOR & CEO

Heather collaborates with higher education institutions, governments, and non-governmental organizations to develop strategic international partnerships in support of improving access to, and quality of higher education around the world.



[LINKEDIN PROFILE](#)

DIAN TRABULSY, ESQ.

PRESIDENT-ELECT, EXECUTIVE BOARD

Dian joined the Asherah foundation in 2021. She is a governance leader who has extensive knowledge and experience in insurance and investment industries. In addition, she is a published author, public speaker focused on women's empowerment, and youth coach.



[LINKEDIN PROFILE](#)

JUAN ALANIS

2021 PRESIDENT, EXECUTIVE BOARD

Founder and CEO at Grupo Azimuth, Juan, originally from Mexico, has vast experience in strategic planning in Latin America and Europe. He has previously held key leadership positions for The Estée Lauder Companies, P&G, and Samsonite.



2021 EXECUTIVE BOARD



[LINKEDIN PROFILE](#)

SUNIL KHIANI

SECRETARY, EXECUTIVE BOARD; CHAIR,
BOARD DEVELOPMENT COMMITTEE

Sunil joined the Asherah Foundation in 2021. He has over 18 years of industry experience with a career that ranges from product leadership to commercial and general management. He is currently Vice President Operations and Data Science North America for NielsenIQ. He received his MBA in finance from Gujarat University.



[LINKEDIN PROFILE](#)

DALE HILL

TREASURER, EXECUTIVE BOARD; CHAIR
FINANCE COMMITTEE

Dale joined the Executive Board of the Asherah Foundation in 2017. She has a distinguished career in monitoring and evaluation (M&E), management, aid policy, and international economic development for the World Bank and many other NGOs. She received her MPA from Princeton University.



[LINKEDIN PROFILE](#)

FADIMA SAVADOGO

PAST PRESIDENT 2020, EXECUTIVE BOARD;
CHAIR, CONSTITUENT ENGAGEMENT &
SCHOLARSHIP OVERSIGHT COMMITTEE

Fadima is an experienced knowledge management professional. She joined the Executive Board in 2018. Currently at the International Finance Cooperation (IFC), she has also worked for the World Bank and World Learning. She is originally from Burkina Faso.



2021 EXECUTIVE BOARD



[LINKEDIN PROFILE](#)

DEEPIKA WARRIER

EXECUTIVE BOARD MEMBER

Deepika is an experienced international marketing and branding professional and is currently the CMO of Diageo India. She has previously held important leadership positions within the PepsiCo corporation in Dubai, as well as in India, where she is originally from. She joined the Asherah Foundation Executive Board in 2020.



[LINKEDIN PROFILE](#)

STEFANIE LUCAS

CHAIR, PR & MARKETING COMMITTEE

Stefanie joined the Asherah Foundation Executive Board in 2021. She has vast experience in international marketing and product development. She is currently the CRO at American Leather Holdings.



[LINKEDIN PROFILE](#)

MAY SHANA'A, PHD

CHAIR, DEVELOPMENT COMMITTEE; CO-CHAIR, CONSTITUENT ENGAGEMENT & SCHOLARSHIP OVERSIGHT COMMITTEE

May became a member of the Asherah Foundation's Executive Board in 2021. Currently based in Germany, she has been a member of the Board of Trustees for the Max Planck Foundation for almost 4 years. May had an extensive global leadership career at organizations including Beiersdorf, Johnson & Johnson, and Unilever. In addition, she is a human rights and gender equality advocate.



2021 EXECUTIVE BOARD



[LINKEDIN PROFILE](#)

TARA VAN DER HOORN

SECRETARY, EXECUTIVE BOARD; CHAIR, BOARD DEVELOPMENT COMMITTEE (FORMER)

Tara is an experienced international leader, convener, and connector. She joined the Asherah Foundation Executive Board in 2020 and is based in the Netherlands.



[LINKEDIN PROFILE](#)

AMBER KELLEHER

CO-CHAIR, FINANCE COMMITTEE (FORMER)

Amber is an experienced nonprofit and membership association leader. Formerly the President and CEO of the United Way Retirees Association, she now serves as the Executive Director of TESOL International Association. She is based in the Washington, DC area.

2021 ADVISORY BOARD



APARNA MAHAJAN



ASMA KATHIWALLA



AYA HARB



CAROLLANN BRAUM



IRWIN LIAW



KARIM AMADE



MARIA KIRILOVA



MIREILLE "MIMI" DAMIBA



NICK GAST



THOMAS FITZGIBBON

ASHERAH FOUNDATION'S AMBASSADORS



EMILY
LIEBTAG



GURPREET
BHATIA



JUAN
DOMINGO
BAUTISTA



MOTTY
GREENHOUSE



NEIL ST.
CLAIR



PAM
GOUNDER



PATRICIA
VALERIO



ROBERT
HEISE

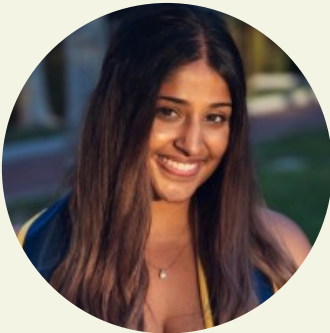


SALIFOU
DABO



STACY
YBARRA

ASHERAH FOUNDATION SENIOR MANAGEMENT INTERNS



AMAN
DOSANJH



AMINA
MAJEED



CRISTY
MENDOZA



JENNA
THORETZ



MATTHEW
WILSON



MOLLY ROUSH



RIJKAARD
AMARA



SANNIDHI
SHASHIKIRAN



VIVIAN
THIONG'O



ASHERAH FOUNDATION NONPROFIT MANAGEMENT INTERNS



ANNA
TURCOTT



ANISHWAR
SEN



JORDAN KNOX



LILY
WESTOVER



LYNNIE
MCILVAIN



PRIYAL NYATI



TALA
FALHOUM

ASHERAH FOUNDATION INTERNATIONAL DEVELOPMENT INTERNS



ADELA
ARRIOLA



ANNA BENSON



ANNA ENGLE



ANASTASIA
GEVEL



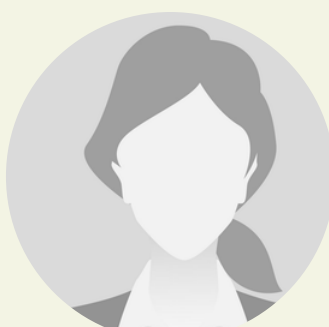
ANDREA
REMES



ASMA AHMED



DAPHNE
CHEBESI



DINA
RISHMAWI



ELIZABETH
HARTNETT

ASHERAH FOUNDATION INTERNATIONAL DEVELOPMENT INTERNS



EVELYN CHAN



FATEME
TAVAKOLI



JULIANA
PAVEL



JULIE
OSTAPJUKOVA



NISHTHA
MEHTA



REINE
MADRIAGA



SHIANNA
CHASTAIN



YARA MAYYA



THE ASHERAH FOUNDATION WOULD LIKE TO GIVE ESPECIAL THANKS TO ALL THESE WOMEN AND MEN WHO HAVE BEEN WORKING WITH THE ORGANIZATION THROUGHOUT THE WHOLE YEAR TO CONTINUE TO SUPPORT WOMEN'S ACCESS TO HIGHER EDUCATION AROUND THE WORLD. DESPITE THE GLOBAL PANDEMIC, 2021 HAS BEEN ANOTHER SUCCESSFUL YEAR THANKS TO ALL OF YOU.

THANK YOU!

CONTACT
INFORMATION



FOR MORE INFORMATION FIND US ON OUR
OFFICIAL WEBSITE,
SEND US AN EMAIL AT
INFO@ASHERAHFOUNDATION.ORG, OR THROUGH
OUR SOCIAL MEDIA PLATFORMS

